



THRIVE

Healthy Families, Strong Communities at Mountain Home

In this Issue:

Program Updates

Hear from our Interim Executive Director, and catch up on Mountain Home updates.

Mother's Day Tea

Check out the latest information on our 20th anniversary Mother's Day Tea Celebration.

Client Successes

Hear what our clients are saying about our programs from our annual client satisfaction survey.

Setting the Table for the Next Generation: The 20-Cup Circle

Dear Friends,

When I helped found Mountain Home more than two decades ago, the vision was simple: ensure that young mothers and their babies had a safe place to land and the support they needed to build healthy, stable futures. What began with meetings of like-minded, philanthropic women at my kitchen table has grown into a comprehensive two-generational program serving mothers and children from across Montana.

None of this would be possible without you. This past year has been one of meaningful growth and renewal, and every step forward has been taken with your support beneath our feet. In July 2025, Mountain Home moved into a newly renovated facility, expanding our capacity to serve even more families. I am honored and grateful to be stepping into the role of Interim Executive Director at this point in Mountain Home's story. Every time I walk through the halls and see children and mothers playing or families sharing meals together, I'm reminded that this work has always been powered by community. Mountain Home exists because neighbors, donors, and partners continue to believe that when we invest in young families, we invest in the future of our entire community.

That spirit of community is something we celebrate each year at our Mother's Day Tea, and this year's gathering is especially meaningful as we mark the 20th Anniversary of this beloved event. I warmly invite you to join us on **Friday, May 8th, 2026 at 11:30am at the Home Arts Building at the Missoula Fairgrounds** for an afternoon of celebration, reflection, and hope. In honor of this milestone year, we are introducing the 20-Cup Circle in celebration of the Tea's 20th anniversary. **Donors who contribute \$20,000 will be recognized as 20-Cup Circle members.** Like a shared tea table, the 20-Cup Circle reflects the power of community partners coming together to "set the table" for the next generation of families served by Mountain Home.



As I step into the role of Interim Executive Director, I feel deeply grateful to witness how far Mountain Home has come, and even more hopeful about where we are going together. Thank you for being part of this journey. I hope you will join us on May 8th to celebrate the families whose lives have been changed over the past 20 years, and the many more we will serve in the years ahead.

With gratitude,

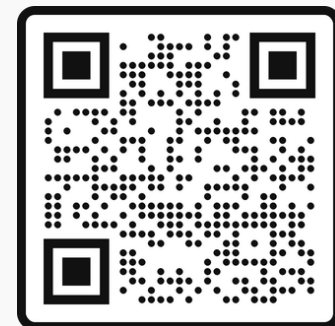
Laura Snyder, Founder & Interim Executive Director, Mountain Home Montana





Join us for Mother's Day Tea 2026

As Laura mentioned in her update letter above, we're excited to share more about this year's 20th Annual Mother's Day Tea Fundraiser, happening **Friday, May 8, from 11:30 am-1:00 PM at the Home Arts Building at the Missoula Fairgrounds**. RSVP for yourself and your friends via the QR Code or at <https://www.mountainhomemt.org/mdt2026rsvp/>.

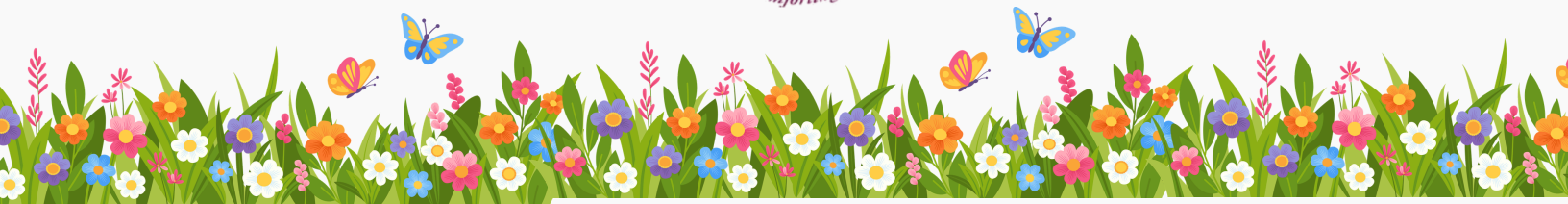


Over the past 20 years, hundreds of Montana families have built stable, healthy futures because this community chose to invest in them. That's something worth celebrating.

If you're ready to help set the table for the next 20 years, we'd love to welcome you into the 20-Cup Circle. A gift of \$20,000 honors this milestone and ensures the families who come to us next have everything they need to thrive.

We're also deeply grateful for event sponsors at every level. We'd love to have you at the table. Reach out to Allison at allison@mountainhomemt.org to learn more. 🍰🌸

2026 SPONSORS



2025 Client Successes

Every autumn, Mountain Home conducts a key piece of our programmatic evaluation, our annual client satisfaction survey. This year, numerous moms highlighted our group therapy programs as giving:

- “a sense of community and connection”
- “a space where everyone had a voice”
- “a space to express my emotions”

Hearteningly, in 2025, we also saw the following positive outcomes for our parents resulting from Mountain Home’s services:



After enrolling at Mountain Home:

- **94%** reported their **overall experience** as Good, Great, or Excellent.
- **100%** of families felt safe when accessing our services.



After enrolling at Mountain Home:

- **100%** of families improved their access to **health and medical care**.



Before Mountain Home:

- **61%** of families were unhappy with their **housing** situation.

After enrolling at Mountain Home:

- **97%** reported their **housing** as Good, Great, or Excellent.



After enrolling at Mountain Home:

- **100%** of parents made improvements in their **education** goals outcomes.
- **90%** of moms improved their **employment** situation.



Before Mountain Home:

- **85%** reported the need for **mental health services**.

After enrolling at Mountain Home:

- **88%** reported that their mental health was Good, Great, or Excellent.



Before Mountain Home:

- **60%** of parents had limited access to **affordable childcare**.

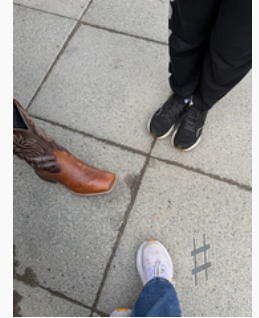
After enrolling at Mountain Home:

- **87%** were satisfied with their **childcare** situation.



Program Highlight: Art Therapy Group

This year, our Licensed Addiction Counselor, Shelley, started an Art Therapy Group for any interested Mountain Home clients. Last month, they took a walking tour of all of Missoula's downtown art walk. At Mountain Home, we find that our most effective forms of engagement come from activities that meet clients where they're at and engage them in their interests. Group therapy can be especially beneficial as a way for our families to build and grow their peer support networks, developing lasting and meaningful relationships with parents who have similar challenges and experiences.



Photos from the group's art walk.

Staff Celebrations

We're proud to celebrate the people who show up every day for our families

March

- 🎂 Birthdays
 - Toni A.
 - Kay S.
 - Mary G.
- 📅 Work-aversaries
 - March 16th - Whitney B. (4-years)
 - March 25th - Shelley G. (2-years)
 - March 30th - Kinley P. (1-year)

May

- 🎂 Birthdays
 - Gisele B.
- 📅 Work-aversaries
 - May 5th - Rose M. (1-year)
 - May 13th - Emma P. (1-year)
 - May 27th - Courtney C. (1-year)
 - May 28th - Nikki S. (1-year)

April

- 🎂 Birthdays
 - Trish M.
 - Madi L.
 - Melodee S.

June

- 🎂 Birthdays
 - Allison S.
 - Rachel R.
 - Eva H.
 - Katelynn S.
 - Whitney B.
 - Brooke D.
- 📅 Work-aversaries
 - June 3rd - Erin S. (7-years)
 - June 16th - Allison S. (1-year)
 - June 19th - Mandy N. (2-years)



Set the Table This Spring

Before coming to Mountain Home, 85% of our moms had unmet mental health needs. After enrolling, 88% report their mental health as good, great, or excellent. Behind that number is a community that decided to show up. That community is you.

As we celebrate 20 years of the Mother's Day Tea, we're inviting you to make your mark on the next 20.

A gift of \$250 covers the cost of one mom achieving her high school diploma — a milestone that changes the trajectory for her and her child.

Every gift at every level makes a difference. Give what feels right for you this spring.

Give today at mountainhomemt.org/donate



Scenes from past Mother's Day Teas

Want to explore other ways to give, including IRA gifts or planned giving? Allison would love to talk. **Allison Strekal, Chief Development Officer** 406-203-1676 | allison@mountainhomemt.org

