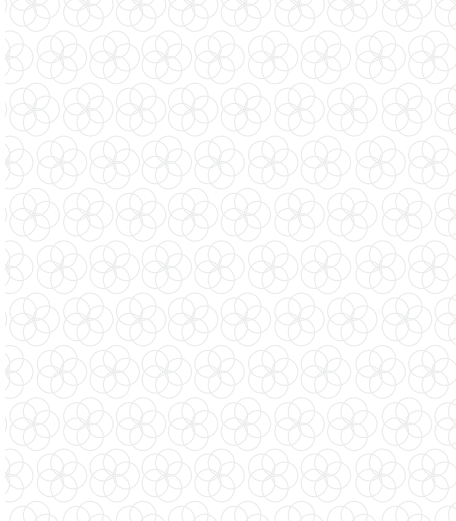




**Strengthening community,
two generations at a time**

letter from the
EXECUTIVE
DIRECTOR



Greetings!

I want to introduce our 2021 annual report with a big THANK YOU to our community of support. Our network this past year expanded with inspiring generosity. Also THANK YOU to the families we serve, because they continue to motivate those working with them to fiercely advocate, think holistically and lead positive change. Despite the pandemic, we established new partnerships, increased public awareness, and grew staff commitments to our work at Mountain Home.

The numbers speak for themselves. We have increased the number of families served by 20% in 2021 and have set ambitious goals to increase by another 18% in 2022. We recognized the importance of starting earlier and intensifying our two-generational approach. We doubled the impact of our children's programming last year, providing 20 kids with mental health support as well as serving 15 children in our new trauma-informed

childcare. Trauma-informed care is evidence-based curriculum that recognizes and addresses the complex social, emotional, and mental stressors of trauma that impact healthy youth development.

A sneak peak for 2022: We look forward to advancing our commitment towards Justice, Equity, Diversity and Inclusion, implementing a formal and accredited doula and healthcare navigation program, continuing to combat the housing and labor crisis and much, much more! All of which, we will achieve while maintaining themes of resiliency, opportunity, empowerment and a strong belief in achieving and sustaining healthier and happier futures!



With deepest gratitude,

Steph Goble
Executive Director

P.S. More amazing news, despite the intense housing pressures, 98% of Mountain Home families served in 2021 were in stable housing after one-year of services! For more of these inspiring statistics, check out the outcomes section and us at mountainhoment.org

2021
**MOM
WINS**

STEPHANEY

Stephaney has secured and maintained independent housing and passed her written drivers test. She's also changed jobs while still maintaining employment, the whole time and her son is thriving in school and with his peers.





PURPOSE

Our mission is to provide a safe home and nurturing community where young mothers discover their strengths, and children thrive.

10 THINGS TO CELEBRATE IN 2021

With the ongoing challenges of a pandemic, Mountain Home, it's families, staff and network of support, teamed together to build long-term resilience, improved continuity and accessibility of care, and help ensure healthier and happier futures.

GOAL: KEEP GOING

- 1 All of our wrap-around services remained safely open. We improved online services and offered safe opportunities for connection and accessibility – **increasing families served by 20%.**

GOAL: START EARLIER

- 2 We recognized the importance of starting earlier and intensifying our two-generational approach. We branched our licensed mental health clinic into an Adult & Children Services model, that has specifically trained adult and children therapists, case managers and community support specialists. **We already doubled our reach, serving over 20 independently enrolled kids.**
- 3 We served approximately **2500 nutritious meals and snacks** to children with help from the Child & Adult Care Food Program, and about 14,000 well balanced meals in our residential program.

- 4 Opened our onsite childcare, Ariya's Circle, the state's first trauma-informed childcare. We completed a renovation project that set the path for providing exceptional care to some of the most vulnerable children in our community. **We provided approximately 1750 hours of compassionate, nurturing, and trauma-informed care for 13 children.** As research shows, every moment counts in years 0-3.

GOAL: EXPAND INFRASTRUCTURE

- 5 Despite the global staffing shortages, we continue to **invest in professional development and retaining highly qualified staff.** In 2021, Mountain Home hired talented staff members to fill 11 new positions, which included doubling the reach of our Children's Mental Health Program, growing our Community Center programming, and expanding capacity to serve more families.



- 6 Leveraged our 2020 professional **Racial Justice Audit** to inform an ongoing action plan to ensure Mountain Home is **inclusive to families of all races and backgrounds**. Additionally, we implemented a **competitive, transparent and equitable compensation philosophy** to enhance and diversify our working culture.
- 7 Mountain Home is committed to **reducing our carbon footprint** with systems for getting donations in the hands of people that need them. In 2021, we started composting, reinforced our recycling program, and upgraded to a Hybrid vehicle for staff and client transportation.

GOAL: CONNECT WIDELY

- 8 Hosted **235+ events, classes and workshops in our Community Center**, ranging from book clubs, to financial aid workshops, baby showers, leadership training, health and wellness classes, study tables, car seat safety courses and much, much more!
- 9 Thanks to our dedicated, weekly volunteers, we successfully launched our **8th Open Table**, which offers families organic, long lasting support networks.
- 10 **Cultivating connections** to create better services and policies alongside Montana Pediatrics, MCPS High Schools, Friends of the Children, Families First, All Nations Health Center, Zero to Five, the At-Risk Housing Coalition, and many more.

This would not be possible without you!

We are proud to have such committed supporters. **Between 2020 and 2021, the total amount donated by caring individuals like you doubled.** Thank you for all the good you have made possible for the moms and kids we serve.

OUTCOMES

After **1 year of care**, moms served in 2021 saw the following outcomes:

BASIC NEEDS



98% have stable rental housing

95% have access to adequate food and nutrition

70% of moms have a license and access to a car
(up 46% from intake)

PHYSICAL HEALTH



100% had appropriate prenatal & preventive child well care

88% had a consistent medical provider

98% clients have access to health insurance

MENTAL HEALTH



90% of moms' mental health is stable, despite over 90% being diagnosed with intense anxiety, depression, and or PTSD, largely due to past trauma

85% demonstrated visible improvement in self esteem

EDUCATION & EMPLOYMENT



44% attended or completed technical training or community college while parenting

82% were employed 1 year into the program

PARENTING



96% of moms and their children remain safe, healthy and together

100% parents showing active support of healthy child development

97% use appropriate discipline



KATIE

Katie overcame many challenges in the past 2 years. Not only did she find and maintain housing and employment, she was recognized as employee of the year at her work. She is self-sufficient and the best parent she can be for her children.

2021
**MOM
WINS**

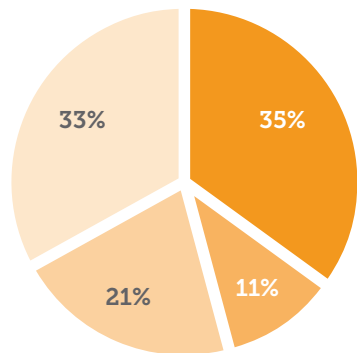
JILL

Jill is completing her HiSET and is fully employed, utilizes childcare and has been speaking at Mountain Home public events to help advocate for other young families.



FINANCIALS

by the numbers

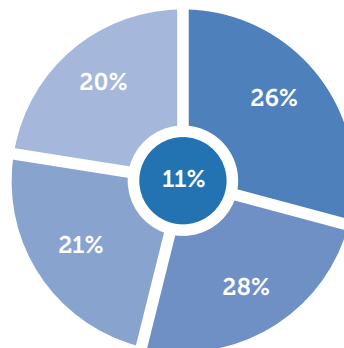


2021 INCOME

- Government Grants **35%**
- Earned Income **11%**
- Private Grants **21%**
- Individual and Business Donors **33%**

2021 EXPENSES

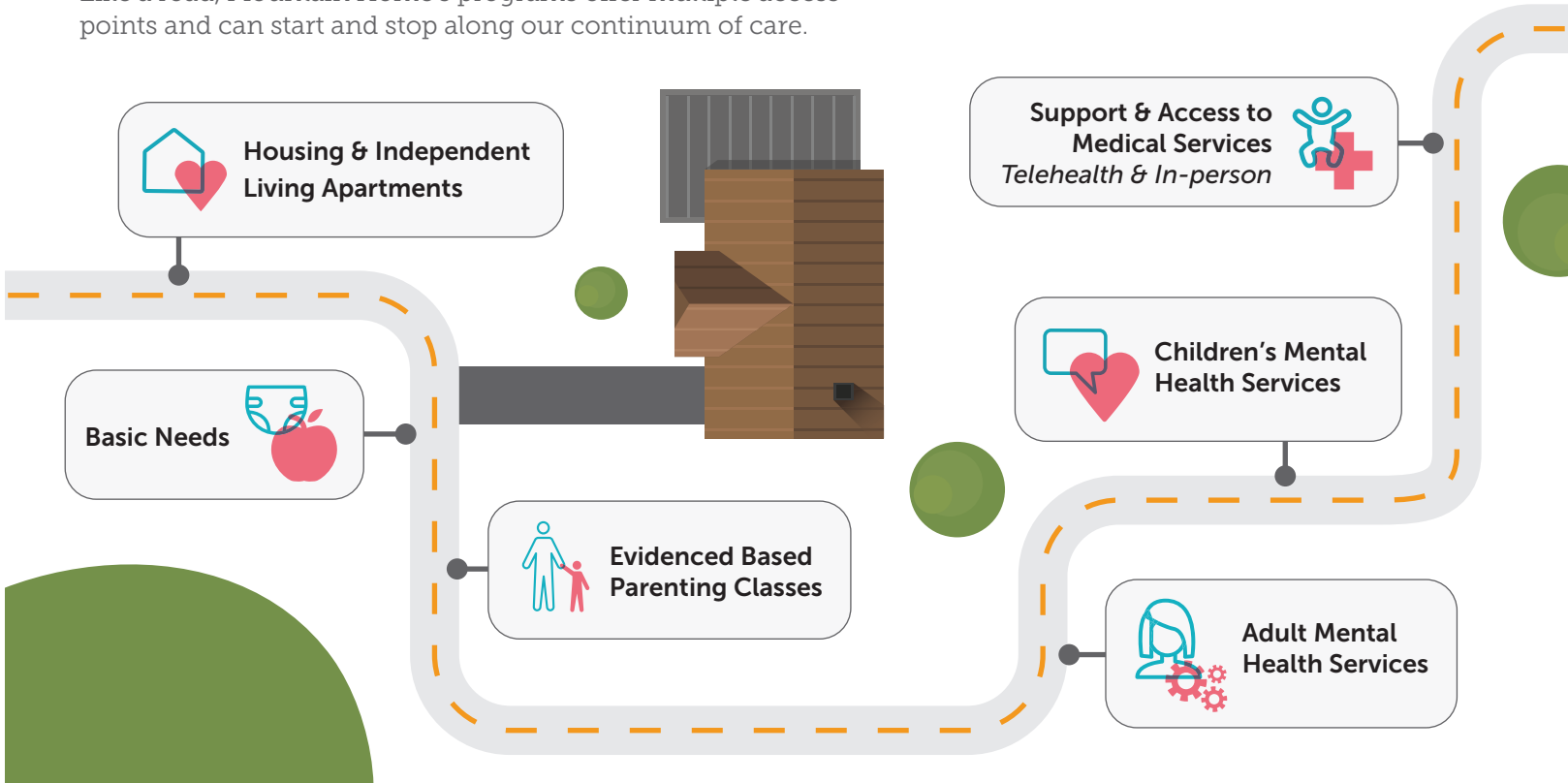
- Core Mission Support: Admin/Fundraising **11%**
- Supportive Housing **26%**
- Adult Therapeutic Services **28%**
- Life Skills **21%**
- Children's Therapeutic Services & Childcare **20%**



PROGRAM OVERVIEW

Road map of Mountain Home's wrap around support

Like a road, Mountain Home's programs offer multiple access points and can start and stop along our continuum of care.

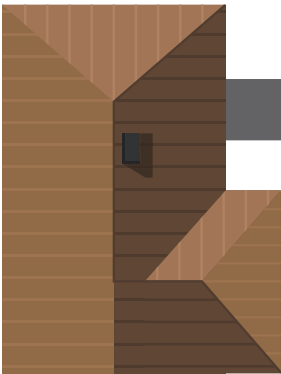





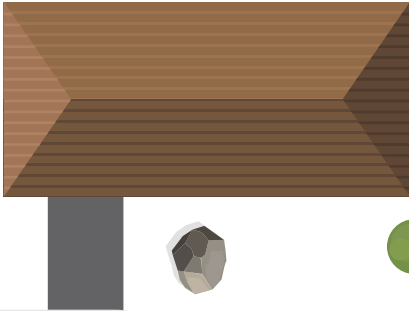
Trauma Informed Childcare




Supportive Education & Employment Services




Community Center
Classes, Events & Local Resources



Access to Transportation
Both Private & Public



Open Table
Volunteer Support



Peer Support

Big thanks to our
2021 SUPPORTERS

private grants \$1,000+

Cadeau Foundation

Charles Engelhard Foundation

Crocus Foundation

Dennis and Phyllis Washington Foundation

Drollinger Family Charitable Foundation

Foundation for Community Health

Gianforte Family Foundation

Gilhousen Family Foundation

Grace Jones Richardson Trust

Judy Family Foundation

Kiwanis Club of Missoula

Louis L. Borick Foundation

Markovich Family Foundation

Margaret V. Ping Foundation

Marshal and Mary Brondum Special

Assistance Foundation

Max and Betty Swanson Foundation

May and Stanley Smith Charitable Trust

Montana Community Foundation

Montana Mental Health Trust

Muralt Family Foundation

O.P. and W.E. Edwards Foundation

Otto Bremer Trust

PacificSource Foundation

Sample Foundation

Town Pump Charitable Foundation

Treacy Foundation

Tykeson Family Charitable Trust

Women's Giving Circle of the Missoula

Community Foundation

We couldn't do this
WITHOUT YOU

corporate donors \$500+

Apricot Lane

Arrowleaf Construction

Bank of America Charitable Gift Fund

Boone Karlberg, PC

Clark Fork Law Offices, PC

Clearwater Credit Union

Community Medical Center

Cremation Burial Society of the Rockies

DA Davidson

Dillard's

Garden City Funeral Home

Garlington, Lohn, and Robinson

Good Food Store

First Interstate Bank

First Security Bank

George J. Igel and Co., Inc.

Ink Realty Group

JCCS Certified Public Accountants

Lady Eagles FOE NO. 32

Lake Missoula Group

LumenAd

Maclay Law Firm

Missoula Lions Club

Missoula Pediatric Dentistry

Missoula Power Equipment

Myers Wealth Management

Montana Cancer Specialists

Mountain Broadcasting

Nelson Brothers, LLC

NewFields

Noble Metal, Inc.

Northern Rockies Orthopedics

Park Side Credit Union

PayneWest Insurance

Pintler Wealth Management
Group of Wells Fargo Advisors

Providence Montana

Republic Services

Rick's Auto Body, Inc.

Riverside Contracting, Inc.

Rural Dynamics

Southgate Mall Associates, LLC

Sunset Memorial Gardens

TD AmeriTrade Institutional

Tenacious Dames Riding Club

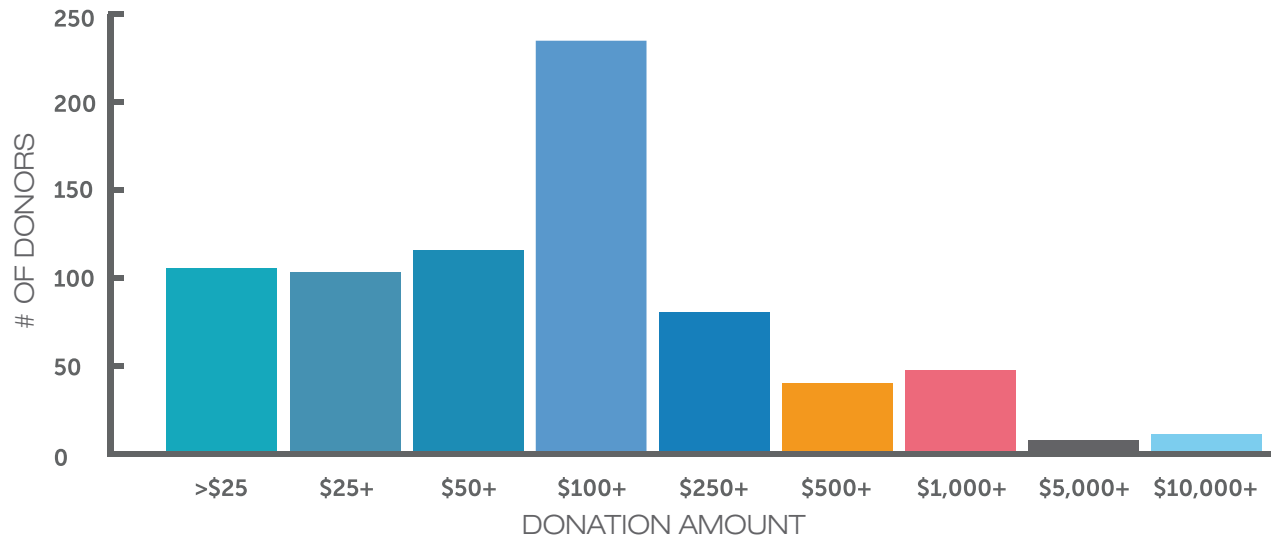
United Way of Missoula County

Water Rights, Inc.

Western Montana Clinic

IT TAKES A VILLAGE

We know support comes in many forms and amounts. We appreciate all the gifts and individuals represented here. Each has direct impacts on the families we serve and allow for our wrap around services to expand and reach more each year!





ARIEL

Ariel is breaking a generational cycle of abuse, prioritized healthcare for her children, and is building an organic and healthy support system.



Mountain Home is a statewide leader in offering independent Children's Mental Health services along with trauma-informed childcare

LYDIA ARNOLD

I give to Mountain Home because they invest in people and families providing a safe place to heal, grow, learn and secure a better future for themselves and their children. Mountain Home is invaluable to our community, and I'm thankful for this organization and their dedication to helping people change their futures.

LYDIA ARNOLD

Missoula Police Officer



donor spotlight





GRACE DECKER

I give to Mountain Home because they are leaders for deep listening and relationship-building that are at the heart of everything they do. From starting a trauma-informed childcare program, to supporting parents in using their voices to advocate, Mountain Home meets families where they are and wraps a caring, empowering network around them.

GRACE DECKER

*Zero To Five Strategic
Collaboration Coordinator*

LLEWELLYN FOUNDATION

Mountain Home Montana's trauma-informed services for young mothers and their children are becoming models for the state and nation. Partnering with innovative, effective organizations to tackle such complex issues as generational trauma and poverty is an important aim of the Llewellyn Foundation. It has been incredibly rewarding to support Mountain Home as the staff work to empower young women to help themselves and the next generation.

CAROLINE KURTZ

Trustee for the Llewellyn Foundation



donor spotlight



BOARD OF DIRECTORS

Kira Huck

President

Jamie McConnell

Vice President

Kelly Buckley

Secretary

Brenda Peyton

Treasurer

Laura Snyder

Founder, Advisory Board Member

Ana Beard

Beth Conway

Caroline Lauer

Duran Caferro

Jaylyn Baxter

Kelly Driscoll

Naomi Billedeaux

Samantha Stanley

Sarah Bush

Tracy Boehm Barrett





2606 South Ave W
Missoula, MT 59804
mountainhomemt.org

Nonprofit Org.
US Postage
PAID
Permit No. 536
Missoula, Montana



First Name Last Name
Street Address
City, State, Zip

Photos of real Mountain Home clients by Ashley Rhian